

# Nether Providence Township



Spring/Summer 2024

## INSIDE THIS ISSUE

Township Events.....	3-5
Park Updates.....	6
In The Community .....	7-8
Public Works.....	9
Police Department.....	10
Nether Providence Fire Companies.....	11,13
Environmental Advisory Committee.....	14
Township News.....	15-17
Board of Commissioners & Committees .....	18
Lightning Safety.....	18

## Welcome to Our New Newsletter

Dear Residents,

As the weather warms, we are eagerly anticipating the sight of residents enjoying our township parks. It is a testament to the hard work of our Public Works Department and the support of grant funding that our parks continue to be cherished community spaces. I am thrilled to announce that additional trails will soon grace Furness Park, providing even more avenues for outdoor exploration and enjoyment. Furthermore, we are enhancing the facilities at Hepford Park with the installation of new dugouts, creating an even better experience for our athletes and spectators alike.

I would like to take this opportunity to express our sincere gratitude to our dedicated Public Works crew. Their tireless efforts, from managing leaf collection to ensuring our streets are safe during snowy days and nights, do not go unnoticed. Their commitment to serving our community is truly commendable.

As we eagerly anticipate the return to outdoor activities, I invite you all to join us in celebrating the wonders of our township. Whether it's a leisurely stroll through our parks, a family picnic, or cheering on local teams at Houston, Sapovits, Hepford, and Bullens Lane Parks, there is something for everyone to enjoy. Nether Providence Township is not just a place to live; it's a place to thrive and connect with our neighbors.

As your Township Board President, I am honored to serve alongside dedicated individuals who share a common goal of making our community the best it can be. Together, let us embrace the upcoming spring and summer seasons with enthusiasm and appreciation for the remarkable place we call home.

Warm regards,

*Kaitlin A. McKenzie*

Nether Providence Twp  
President, Board of Commissioners







## Your Local Real Estate Expert



**BERKSHIRE  
HATHAWAY**  
HomeServices

Fox & Roach,  
REALTORS®



### PROFESSIONAL ACCREDITATIONS

- Accredited Buyer's Representative® (ABR)
- Seller Representative Specialist (SRS)

**Sandra McCulley**

REALTOR

sandra.mcculley@foxroach.com

Direct:(610) 368-6641



## NETHER PROVIDENCE TOWNSHIP OFFICES

214 Sykes Lane, Wallingford, PA 19086  
Telephone: 610-566-4516 • Fax: 610-892-2890 • Website: [www.netherprovidence.org](http://www.netherprovidence.org)  
Township Manager: Dave Grady  
Office Hours: Monday through Friday 9 a.m. to 5 p.m.



## TOWNSHIP EVENTS

### Nether Providence Township Summer Camp 2024

June 24th – July 25th

*No camp Thursday, July 4th*

Nether Providence Elementary School (NPE)  
8:30am – 12:00pm Monday – Thursday  
Programs offered for Kindergarten through 6th  
grade (grade entering in Sept 2024)  
Camp fee \$295.00 (fee is for ALL 5 weeks)



Registration to begin April 1, 2024. Registration may be dropped off or mailed to Nether Providence Township, 214 Sykes Lane, Wallingford PA 19086. Payment for campers must be attached to the registration from. Checks are made payable to Nether Providence Township. Questions regarding the Summer Recreation program can be directed to Maureen Feyas, at [mfeyas@netherprovidence.org](mailto:mfeyas@netherprovidence.org) or 610-566-4516 ext 217.



The Nether Providence Township Summer Camp does not discriminate against any participants on the basis of race, national origin, ethnicity, citizenship, gender, age, creed, sexual orientation, ancestry, disability, or any other characteristics protected by law. The Nether Providence Township Summer Camp is an Equal Opportunity care provider.

### Nether Providence Township's Summer Camp 2024



School-aged children through 5th grade are invited to join the fun at this five-week, half-day camp running from the end of June to the end of July.

Campers will spend mornings exercising their bodies and minds through a variety of activities. The camp features soccer games, crafts, and special events including waterslides, an obstacle course, and a visit from Judy Tudy the Clown.

Please check the website/Facebook page for information and registration. Please contact Maureen Feyas at 610-566-4516 x217 or [mfeyas@netherprovidence.org](mailto:mfeyas@netherprovidence.org) with any questions.

## Camp Counselor Positions

**ARE YOU INTERESTED IN PART TIME SUMMER WORK AND ENJOY WORKING WITH KIDS?**

**Camp Counselor positions are available!**

Applicants must be 16 years old before camp starts.  
Monday through Thursday, 8:00 a.m. – 12:30 p.m.  
June 20th–July 25th (No camp Tuesday, July 4th)

Applications can be found on the Township website. Please contact Maureen Feyas at 610-566-4516 x217 or [mfeyas@netherprovidence.org](mailto:mfeyas@netherprovidence.org) with any questions.

## Counselors In-Training

Volunteer Counselors in Training (14-15 years old) positions are available.

Applications can be found on the Township website. Please contact Maureen Feyas at 610-566-4516 x217 or [mfeyas@netherprovidence.org](mailto:mfeyas@netherprovidence.org) with any questions.

## STAY CONNECTED

Facebook: Nether Providence Township  
E-Newsletter: Sign up for the Township's E-newsletter on our website  
YouTube: Nether Providence Township  
TV: Channel 5 for Comcast, and channel 37 for Verizon







## NETHER PROVIDENCE, MEDIA, AND SWARTHMORE ELECTRONICS RECYCLING AND SHREDDING EVENT



Saturday, June 22nd  
9 AM to 1 PM



**Strath Haven High School, Wallingford, PA  
(Enter from Brookhaven Rd, Back parking lot)**

**E-Waste:** Recycle almost anything with a plug for free! \*Old-style TV's and CRT monitors do require a disposal fee.

**Shredding:** documents with sensitive information that need to be shredded in a safe, secure, and environmentally friendly method on site. No CDs, or DVDs.

\* Some items require a disposal fee



E-Recycling service is provided by **PAR RECYCLE WORKS** – a local nonprofit that sells reusable materials collected from electronic devices to help pay for salaries and job skill development for formerly incarcerated men and women, in order to support their productive re-entry back into society. For more information on PAR, please see [par-recycleworks.org](http://par-recycleworks.org). Shredding provided by Proshred.



## E-Waste Collection List



We will gladly accept the following items at no charge:

Printers; Mice; Keyboards; Monitors - LCD flat-screen; AV equipment; Phones; Speakers; Motherboards; Hard Drives; Power Supply Wire - chargers, connectors, etc.; Computer Batteries; Laptops; Gaming Equipment; Routers; Server Cabinets; Floppy Disks; Docking Stations; Miscellaneous computer-related materials

**\*\*Because of environmental issues that make safe disposal expensive, there is a fee for the following items:**

- Older CRT Monitors and TVs: \$35 - \$75/each (size varies)
- Flatscreen TVs: \$20/each
- Computer Monitors: \$5
- Air Conditioners, Dehumidifiers, & Air Purifiers: \$20
- Microwaves: \$10

We are unable to accept any of the following: Air conditioners, Large appliances

*\*\*Fees are subject to change based on market conditions.*

# 2024 Delaware County Household Hazardous Waste (HHW) Collection Events

**TICKET MUST BE PRESENT TO ACCESS EVENT** \*Registration required for all events,  
Register at: [delcoshw.eventbrite.com](http://delcoshw.eventbrite.com) or scan the QR code  
\*Registration/QR Code will be activated 6 weeks prior to each event



This Program is offered as a community service to the residents of Delaware County and is not open to businesses, institutions or industry.

~ Sponsored by ~  
County of Delaware

Delaware County Solid Waste Authority

Covanta Delaware Valley, L.P.

Pennsylvania Department of Environmental Protection

*Think Globally, Act Locally!* If improperly discarded, household products containing toxic chemicals can be a threat to people, pets and the environment. Never dispose of hazardous materials in the trash as they may harm your sanitation workers or result in a collection vehicle fire. It is also unsafe to pour HHW down a sink or storm drain as it will end up polluting our drinking water.

## ONLY Household Hazardous Waste will be accepted Electronics Waste & Latex Paint will NOT be accepted

- **Sat., April 20<sup>th</sup>** Emergency Services Training Center  
1600 Calcon Hook Rd., Sharon Hill (Darby Twp.) 19079
- **Sat., May 18<sup>th</sup>** Rose Tree Park  
1671 N. Providence Rd., Media PA 19063
- **Sat., Sept 7<sup>th</sup>** Emergency Services Training Center  
1600 Calcon Hook Rd., Sharon Hill (Darby Twp.) 19079
- **Sat., Oct., 12<sup>th</sup>** Upper Chichester Municipal Bldg.  
8500 Furey Road., Upper Chichester, PA 19061



**ALL EVENTS BY APPOINTMENT ONLY rain or shine -REGISTRATION REQUIRED**

↓↓↓↓	<b>Acceptable HHW</b>	↓↓↓↓	<b>Unacceptable</b> ↓↓↓
------	-----------------------	------	-------------------------

**Flammables**

- Oil-based Paint
- Oil-based Sealers
- Paint Thinner
- Gasoline
- Kerosene
- Gas / Oil Mixture
- Heating/Motor Oil

**Batteries (Non-Alkaline)**

- Lead Acid
- Rechargeable
- Lithium
- Ni-Cad Batteries

**Toxics**

- Pool Chemicals
- Rust / Paint Remover
- Antifreeze

**Herbicides**

**Pesticides**

- Lawn Chemicals

**Caustics**

- Cleaners / Solvents

**Mercury Containing Devices**

- Mercury Thermostats
- Mercury Thermometers
- Fluorescent Tubes  
(Compact Fluorescents a/k/a CFL's may also be recycled at any Lowes or Home Depot)

**We cannot / will not accept any Electronic Items or Latex Paint**

**Unacceptable**

- ⊘ **ELECTRONICS**  
*We cannot accept Electronics*
- ⊘ **Smoke Detectors**  
(Please dispose with household trash)
- ⊘ **Latex Paint**  
Remove lid and allow to dry or mix with absorbent material until no longer a liquid. Discard lids separately and place with your curbside trash.
- ⊘ **Asbestos**
- ⊘ **Explosives**
- ⊘ **Gas or Propane Cylinders**
- ⊘ **PCB's**
- ⊘ **No 50 Gallon Drums**
- ⊘ **Pressurized CFC's**
- ⊘ **Tires**
- ⊘ **Medical Waste**
- ⊘ **Alkaline Batteries** -  
(Please dispose with household trash)

For additional information, contact:  
Delaware County Solid Waste Authority 610-892-9627  
Driving Directions can be found by visiting:

[www.delcoswa.org](http://www.delcoswa.org)

**\*\* 5 GALLON DRUMS LIMITED TO HOUSEHOLD USE ONLY**



Printed on Recycled Paper



## PARKS UPDATES

**Martha Burton Community Park** - New playground equipment will be installed along with other amenities.

**Sapovits** - A walking path from the basketball courts to the playground will be installed, along with minor playground improvements. Lower level basketball court will be resurfaced and expanded with a new basketball hoop. Pickleball court lines will be painted as well.

**Furness Park** - With help from County and State funding the Township construction of Furness Park Phase II, which will connect the existing path to Knoll Road.

**Hepford Park** - Installation of dugouts at Field 1.

**Gouley Park** (former Summit School) - Installation of state-of-the-art field space for various sports and activities. funding for this initiative is coming from a combination of state funds, etc. The Nether-United Soccer Association, and the Swarthmore Recreation Association.

**Houston Park** - The creation of a small trailhead into the park along Rt. 320/Chester road. Also included will be about 400 feet of streambank restoration, a stone trail, and repointing of the historical bridge.

**Use of Recreation Facilities** - Nether Providence is home to nine parks throughout the Township, all with something unique to offer such as playgrounds, picnic tables, pavilions, nature paths, and sports fields.

If you are interested in reserving a park or field, visit the Township website under "forms" and fill out the "NETHER PROVIDENCE TOWNSHIP APPLICATION FOR USE OF RECREATION FACILITIES" form.

*Please note Applications for permits to use the Nether Providence Township Recreation facilities MUST be submitted to the Township at least two (2) weeks before the first date of use.*

Support our local park with a "Love our Parks" yard sign, which can be purchased at the Township building for \$10 during business hours.



Call now for your free in-home consultation!

**610-566-1000**

BudgetBlinds.com

**BUDGET<sup>®</sup>  
BLINDS**

Style and service for every budget.®

Blinds • Shutters • Shades • Drapes • Home Automation

**30% discount with this ad**

Not to be combined with any other offers

©2024 Budget Blinds, LLC. All Rights Reserved. Budget Blinds is a trademark of Budget Blinds, LLC and a Home Franchise Concepts Brand. Each franchise independently owned and operated.

## IN THE COMMUNITY

**The Thomas Leiper House** The Township's historic 1785 Thomas Leiper House is open Saturday and Sunday afternoons, from 1 p.m. to 4 p.m. from April through December each year. Guided tours show you a beautifully restored and furnished home and tell you about the Leiper family's influence in Nether Providence through the generations. Suggested donations – \$1.00 for adults and 50 cents for children. No reservations are needed. Just stop in. Located at 521 Avondale Road in Wallingford, there is a parking lot next to the property. We hope you'll be able to stop in for a visit to see some of the Township's history firsthand!



**Spring/ Summer programs at HKF** International best-selling author and produced screenwriter Sara McDermott Jain is also known as "One Scary Woman" because of her work in the horror and thriller genres.

However, this moniker doesn't just have to do with telling scary stories; it's also about helping others to overcome the fear in their lives. In this presentation, Sara will share about creating a best-selling horror novel, discuss how such stories mimic the way we have psychological breakthroughs, and guide attendees through the process of using "scary story" structure to identify and overcome the fears that might be holding them back from their full potential.

The library has a new collection called The Library of Things, which is a collection of non-traditional materials including board games, lawn games, electronics, kits and more that are all available to check out with your library card!

The American Helicopter Museum & Education Center pass is now available for checkout with your library card, in addition to 7 other museum and attraction passes.

**For adults:** The library is partnering with the Philadelphia Mycological Society for a lecture, Introduction to Mushroom Hunting, on April 16 from 6-7pm.

Please join us for one of our monthly book discussions, "Book Date with Helen Kate" is held on the last Thursday of each month at 6pm and "Keep it Short" is held on the last Friday of each month at 1pm.

**For teens:** Join the Teen Advisory Board, our Cheesy Reads Book Club, or a monthly activity at the library especially for teens ages 12-18.

**For children and families:** PAWS for Reading to live dogs for ages 6 and up is from 4:30 to 5:30 every other Wednesday through May 29th.

Don't forget to check us out this summer because "Adventure Begins @ Your Library." Last summer we brought two of our programs to NPT parks with a new "Lark in the Park" series, which we look forward to doing again!

**For details and to register:** [www.hkflibrary.org/programs](http://www.hkflibrary.org/programs)

*continued on page 8*

Kevin  
**CROWLEY**  
General Contractor/Builder  
**(610) 874-2580**

Proudly Providing Civil Engineering and Surveying Services Since 1973



WATER FACILITIES ENGINEERING | WASTEWATER ENGINEERING | MUNICIPAL ENGINEERING  
STRUCTURAL ENGINEERING | TRAFFIC & TRANSPORTATION ENGINEERING | SURVEYING  
ENVIRONMENTAL ENGINEERING | PLANNING & SITE DESIGN | CONSTRUCTION PHASE SERVICES  
GEOGRAPHIC INFORMATION SYSTEM | DRONE SERVICES | GRANT SERVICES



continued from page 7

## Community Arts Center



Community Arts Center offers countless opportunities to create and enjoy the visual arts. Classes for all ages, exhibits in our spacious gallery, an active outreach program, an artisan's gift shop, and frequent fine art and craft sales allow people to come together and bring art and creativity into their lives.

### Friday Night Live Concert Series

Winter|Spring Season  
<https://communityartscenter.org/friday-night-live-concerts/>

### Spring Semester

Classes for kids and adults  
<https://communityartscenter.org/schedule/>

### Summer Spree Art Camp

Kids entering grades K to 6  
<https://communityartscenter.org/summer-spree-visual-arts-camp-2/>

### Summer Spree Teen Studios

Kids entering grades 7 to 12  
<https://communityartscenter.org/summer-spree-visual-arts-camp-teen-classes-grades-7-to-12/>

For all 2024 events please go to: [www.communityartscenter.org/events/](http://www.communityartscenter.org/events/)

### Office Hours

Monday~Friday: 9 am ~ 6 pm  
Saturday: 10am – 2pm  
Sunday: Closed



### Gallery Hours

Monday~Friday: 10 am ~ 6 pm  
Saturday: 10am – 2pm  
Sunday: Closed

**Historical Commission** - The Historical Commission is back to having monthly meetings every third Wednesday at 7:00 p.m. downstairs in the Township Building. If you are interested in attending, contact Shaina Barnes at [sbarnes@netherprovidence.org](mailto:sbarnes@netherprovidence.org) with your information. We have room for two new members!

**Lightning Safety**

Thunder and lightning storms happen all the time. Know what to do to keep you and your family safe when storms strike!

**Safety Tips**

### Outdoor Safety

- » If you can hear thunder, you are within striking distance of lightning. Look for shelter inside a home, large building, or a hard-topped vehicle right away.
- » Do not go under trees for shelter. There is no place outside that is safe during a thunderstorm.
- » Wait at least 30 minutes after hearing the last clap of thunder before leaving your shelter.
- » Stay away from windows and doors. Stay off porches.
- » There is no safe place outside. Places with only a roof on sports fields, golf courses, and picnic areas are not safe during a lightning storm. Small sheds should not be used.
- » If a person is struck by lightning, call 9-1-1. Get medical help right away.

### Indoor Safety

Turn off computers. Stay off corded phones, computers, and other things that put you in direct contact with electricity or plumbing. You can use a cell or cordless phone.

Do not wash your hands, bathe, shower, do laundry, or wash dishes.



### FAST FACTS

Lightning may strike as far as 10 miles from any rain.



Your Source for SAFETY Information  
NFPA Public Education Division • 1 Batterymarch Park, Quincy, MA 02169



# PUBLIC WORKS

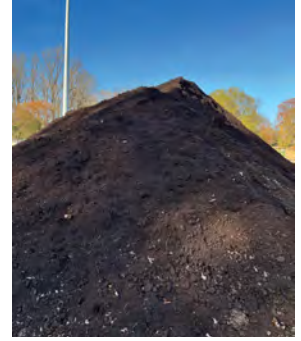
## LEAF MULCH ORDERS

The Township leaf mulch program runs from the end of March until June (or whenever the mulch runs out). Orders are taken at the Township Building at 214 Sykes Lane, Monday – Friday 9:00AM – 5:00PM. No orders will be taken over the phone. Check or Cash only.

**Township Resident** - \$105.00/full truck load \$65.00/half truck load

**Non- resident** - \$130.00/ full truck load \$90.00/half truck

Full Truck load about 5-6 yards; Half truck load about 2-3 yards.



## YARD WASTE

The Township Public Works Department collects yard waste on the second Tuesday of each month.

You **MUST** call the Township to get on the list to have your yard waste picked up.

Simply call 610-566- 4516 Monday through Friday, 9 a.m. – 5 p.m., and provide your address.

Call early as pick-ups can fill up!

- Limbs and branches must not be greater than 4" in diameter and no longer than 5'. They should be bundled together with twine.
- All items must be placed at the edge of your property, curbside. The employees cannot come onto your property to pick up the items.
- If you choose to bag items, they must be in a paper biodegradable bag. **NO PLASTIC BAGS OR PLASTIC BIODEGRADABLE BAGS.**
- Logs, stumps, and branches larger than the parameters above **WILL NOT** be collected. You'll have to arrange for a tree company or your trash hauler to take those items.

**NOT accepted:** Grass clippings, vines, ivy, and weeds. These clog and break the mulch machines.

Drop-offs will be permitted from 8 a.m. to noon on the first Saturday of the month at the Township public works garage located at 5 W. Brookhaven Road, Wallingford.

**To schedule a pickup, please contact the Township office at 610.566.4516 by the Monday prior to the scheduled Tuesday pick-up.**

**DUE TO THE CONSTRUCTION ON THE PUBLIC WORKS GARAGE, PLEASE CHECK THE TOWNSHIP WEBSITE OR FACEBOOK PAGE FOR UPDATED TIMES AND DATES.**

## Curbside leaf collection schedule 2024

**Week of 10/14/24-Wards 2,3,4**

**Week of 10/28/24-Wards 1,5,6,7**

**Week of 11/4/24-Wards 2,3,4**

**Week of 11/11/24 Wards 1,5,6,7**

**Week of 11/18/24 Wards 2,3,4**

**Week of 11/25/24 No Scheduled Pickup Thanksgiving Week**

**Week of 12/2/24 Wards 1,5,6,7**

**Week of 12/9/24 Final Pass through all Wards**

**Residents, please keep leaves off the roads and on the edge of your lawn in order not to clog storm drains.**

**Please make your leaf piles as long as you can and not wide.**



## Tancredi's Auto and Truck Repair

Certified Auto & Truck Technicians



**Joe Tancredi**



500 Fairview Rd.  
Woodlyn, PA 19094  
610-833-2270

1010 E. Fourth St.  
Eddystone, PA 19022  
484-487-0800

Hours of Operation:  
M-F 8:00am - 5:00 pm



Hours of Operation:  
M-F 8:00am - 5:00 pm



# NETHER PROVIDENCE POLICE DEPARTMENT

**Chief David Splain**  
214 Sykes Lane  
Wallingford, PA 19086  
(610) 892-2875  
netherprovidencepolice.org

## NPPD NEWS

### Chief Splain named to PLEAC

The Pennsylvania Law Enforcement Accreditation Commission (PLEAC) recently named Chief David Splain a member. Splain joins 20 other law enforcement professionals from across the Commonwealth of Pennsylvania who comprise the commission.

The Pennsylvania Chiefs of Police Association introduced the accreditation program in July 2001. Since then, 167 law enforcement agencies across the Commonwealth have reached accredited status. Delaware County has 11 accredited law enforcement agencies, including the Nether Providence Township Police Department, which achieved its accredited status in April 2021 under Splain's leadership.

Professional law enforcement executives designed and developed the accreditation program to supply a reasonable and cost-effective plan for professionalizing law enforcement agencies within the Commonwealth.

Accreditation is a progressive and time-proven way of helping departments evaluate and improve performance. The cornerstone of this strategy lies in publicizing the current 125 standards, each having a clear statement of professional goals.

The accreditation process includes a thorough analysis of a department's existing operations by administrators, followed by an adaptation of required policies. A team of independent professionals will verify procedural changes before PLEAC deems a department worthy of accreditation.

Splain said he is looking forward to his new role to help advance the professionalism of law enforcement in Pennsylvania.



Chief David Splain

## SWEET TREATS

Everyone here at the Nether Providence Police Department would like to offer a big thank you to everyone who dropped off a treat or a school kid who has written us a letter. It is so nice to feel appreciated.

Photo: Officer Matt Liss received a stack of heartfelt messages from the first through fourth graders at Mother of Providence Regional Catholic School. Their message: Your dedication doesn't go unnoticed.



## CALL 911

Reminder: Officers are on duty 24/7. We are committed to responding to situations as quickly as possible. Therefore, we encourage anyone wishing to speak with an officer to call 911. That way, the caller has the immediate ear of a dispatcher, who, in turn, has the immediate ear of an on-duty officer. 911 is not JUST for emergencies.

We are here. We want to help.

### EMERGENCY NUMBERS - POLICE, FIRE, RESCUE, AND AMBULANCE: 9-1-1

NON-EMERGENCY NUMBERS	
POLICE	610-892-2875
SOUTH MEDIA FIRE COM.	610-566-6151
GARDEN CITY FIRE COM.	610-876-6801

## SIGN UP FOR CRIMEWATCH

Keep informed by following the Nether Providence Township Police Department on CRIMEWATCH by downloading the CRIMEWATCH app on the App Store or Google Play.

CRIMEWATCH

**POLICE**  
NETHER PROVIDENCE TOWNSHIP

NETHERPROVIDENCEPOLICE.ORG

DOWNLOAD THE FREE CRIMEWATCH APP TODAY

Download on the App Store

GET IT ON Google Play



# NETHER PROVIDENCE FIRE COMPANIES



## South Media Fire Company (SMFC)

Training is held every Monday at 7 p.m. Residents are invited to stop by to learn about us, explore volunteering with us, or just say hi. All are welcome. For questions or information, we can be reached at [info@southmediafire.com](mailto:info@southmediafire.com).

**100% VOLUNTEER - 100% OF THE TIME**

# South Media Fire Company No. 1

535 Washington Avenue  
Media, PA 19063  
(610) 566-6151 • [southmediafire.com](http://southmediafire.com)

## We All Invite You to JOIN US

Since 1922, from the corner of Washington Ave. and Leiper St. in South Media, we've proudly served our friends, family, and neighbors in Nether Providence Township, Rose Valley Borough, and beyond. Continuing that tradition requires people willing to sacrifice a family dinner – or a warm bed on a cold night – so their neighbors are protected when they need it most.

From our young and passionate cadets to retirees who are looking to help in more ways than putting fires out – we are a diverse team that embodies the true spirit of community service. With your help, we can continue the legacy of unwavering community service. We are ALL volunteers – ALL of the time.



**SCAN**  
to Donate

## Neighbors Helping Neighbors

South Media Fire Company invites you to join us in providing service to our community.

100% Volunteer, 100% of the Time!

Stop by Mondays at 7:00PM



535 Washington Avenue  
Media, PA 19063

P: (610) 566-6151

E: [info@southmediafire.com](mailto:info@southmediafire.com)

W: [www.southmediafire.com](http://www.southmediafire.com)



Follow us on  
Facebook and  
Instagram:  
**southmediafire**



# NETHER PROVIDENCE FIRE COMPANIES

## Garden City Fire Company (GCFC)

### Volunteer with the Garden City Fire Company

Garden City Fire Company of Nether Providence Township is looking for new volunteers to serve as firefighters or administrative members. No experience is required to join, and training and gear are provided for free. The department serves Nether Providence Township, Rose Valley Borough, and its surrounding communities.

To learn more about Garden City Fire Company or to fill out an inquiry form, visit [www.GardenCityFirefighter.org](http://www.GardenCityFirefighter.org)



## Become a Volunteer with Garden City Fire Company Today!

When the fire alarm sounds, **Garden City Fire Company** is ready to respond. Our professional volunteers are **trained to save** and **inspired to serve** our community. **Could YOU be one of us?**

If so, Garden City Fire Company wants to meet you! Our volunteers receive stellar training on a local, state and national level without charge. Our trucks and apparatus are state-of-the-art. We are a welcoming group of lifesavers who are hoping to grow by recruiting more volunteers through our website, [GardenCityFirefighter.org](http://GardenCityFirefighter.org)

*"We are looking for community members who are interested in serving and protecting their neighbors,"* said Michelle Carroll, an administrative officer and treasurer with the fire company. "Some of our volunteers have even gone on to paid careers in public service."

Garden City Fire Company serves the citizens of **Nether Providence Township**, **Rose Valley Borough** and its surrounding communities.

*"Being a Garden City Fire Company volunteer has taught me life skills and responsibility as well as pride. I learned dedication and friendship from being here that I've been able to use through life."*

*- William Smith, Firefighter*

### WAYS TO VOLUNTEER:



#### ACTIVE MEMBER FIREFIGHTER

Train to fight fires, participate in building and vehicle rescues, and respond to medical emergencies. You'll learn how to use our high-level equipment and train with our members. Must be 18 years or older.

#### ACTIVE MEMBER ADMINISTRATIVE

Put your skills and talents to valuable use providing administrative support. Assist at community and recruitment events, help with fundraising and grant writing, accounting, bookkeeping, and website and social media updates.

**No experience needed! We provide the training & gear!**



[www.GARDENCITYFIREFIGHTER.org](http://www.GARDENCITYFIREFIGHTER.org)

*Could YOU be one of us?*





# NETHER PROVIDENCE FIRE COMPANIES

## Become a Firefighter with Garden City Fire Company!



“I volunteer because it is the best way to help out in the community, and it has been the most rewarding experience of my life.”

– Willow Chalker, Firefighter

When the fire alarm sounds, Garden City Fire Company is ready to respond. We average over 500 calls a year and serve Nether Providence Township, Rose Valley Borough and surrounding communities.

### WAYS TO VOLUNTEER

- ✓ **ACTIVE MEMBER FIREFIGHTER**– Train to fight fires, participate in building and vehicle rescues, and respond to medical emergencies.
- ✓ **ACTIVE MEMBER ADMINISTRATIVE**– Provide administrative support, assist at community and recruitment events, help with fundraising and more.



**Training and equipment provided!**



[www.GardenCityFirefighter.org](http://www.GardenCityFirefighter.org)

  [gardencityfire65](https://www.instagram.com/gardencityfire65)

### ROBERT W. SCOTT ATTORNEY AT LAW

Law Offices of Robert W. Scott, P.C.  
205 North Monroe Street  
P.O. Box 468  
Media, PA 19063

PH: 610-891-0108  
FAX: 610-627-1716  
[rscott@robertwscottpc.com](mailto:rscott@robertwscottpc.com)



Tim D'Ignazio  
Vice President  
Commercial Loan Officer

Phone 610-859-7262  
Email: [tim.dignazio@iwsb.com](mailto:tim.dignazio@iwsb.com)

3 State Road Media, PA 19063

### WANTED! ALL FIREARMS

Gun Collections \* Military/Hunting  
Antique \* Military Artifacts

610-716-5353 Swords/Bayonets  
609-478-2839 We pay CASH on the spot!  
Call John & Stephanie

email: [antiqueandraguns@gmail.com](mailto:antiqueandraguns@gmail.com)  
Federal Firearms License Holder



Catania Engineering Associates, Inc.  
Consulting Engineering & Land Surveyors  
Continued Community Service in our 60<sup>th</sup> Year!

Municipal ♦ Environmental ♦ Civil ♦ Land Surveying  
In Memory of Charles J. Catania, Sr, PE

Elizabeth A. Catania, PE, FNSPE  
Charles J. Catania, Jr., PE, BCO

520 W. MacDade Boulevard  
Milmont Park, PA 19033-3321

Michael J. Ciocco, PE, SEO  
Alex H. Rodriguez, PE  
Daniel J. Archdeacon, PE  
Kristen Chorney, EIT  
Kendria Henson, EIT  
Jake Randolph, EIT

Phone: 610-532-2884 Fax: 610-532-2923

Email: [office10@cataniaengineering.com](mailto:office10@cataniaengineering.com)  
[www.cataniaengineering.com](http://www.cataniaengineering.com)

# ENVIRONMENTAL ADVISORY COMMITTEE- EAC



## BE INFORMED ABOUT MOSQUITO SPRAYING

From the NPT Bird Town Committee

As warm weather arrives, you may be approached by spraying services that promise to rid your yard of mosquitoes. If you consider spraying, you can also consider the fuller picture. Chemical spraying can broadly kill other insects, including butterflies, pollinator bees and those insects that our birds depend upon for survival. Before committing to any spraying, make sure you know and research the effects of the particular chemicals on our songbirds and their food sources and habitat, as well as butterflies and other pollinators.

You should also be aware that the Township Code, Section 189-5 provides: "Control of spray. Where a landowner, his contractor or agent, or a governmental unit or instrumentality engages in ground spraying, the application shall be made in such a way as to prevent any spray from entering upon a neighbor's property, unless the prior consent of such neighbor shall have been obtained". The Pennsylvania Department of Agriculture also has enforcement authorities regarding pesticide drift.

There are effective humane and environmentally-friendly alternatives to chemical spraying, including preventing growth of mosquito eggs and larvae in the first place, by removing sources of stagnant water such as clogged gutters and old tires, where mosquitoes breed. Even small potential items such as birdbaths should be responsibly maintained, including clean-out at least every three days, and possibly using inexpensive 'mosquito dunks', available at local hardware stores. The dunks have a natural soil bacterium to prevent mosquito larvae from growing. Also, insect-eating birds around us, such as woodpeckers and chickadees, are natural mosquito controls. Consider attracting them to your yard (and purple martins, if you can), instead of using pesticide sprays. These safe measures can help control mosquitoes without threatening the survival of our songbirds.

So, as a community member, please get the facts and get the big picture about pesticide effects and songbird survival.

Some resources:

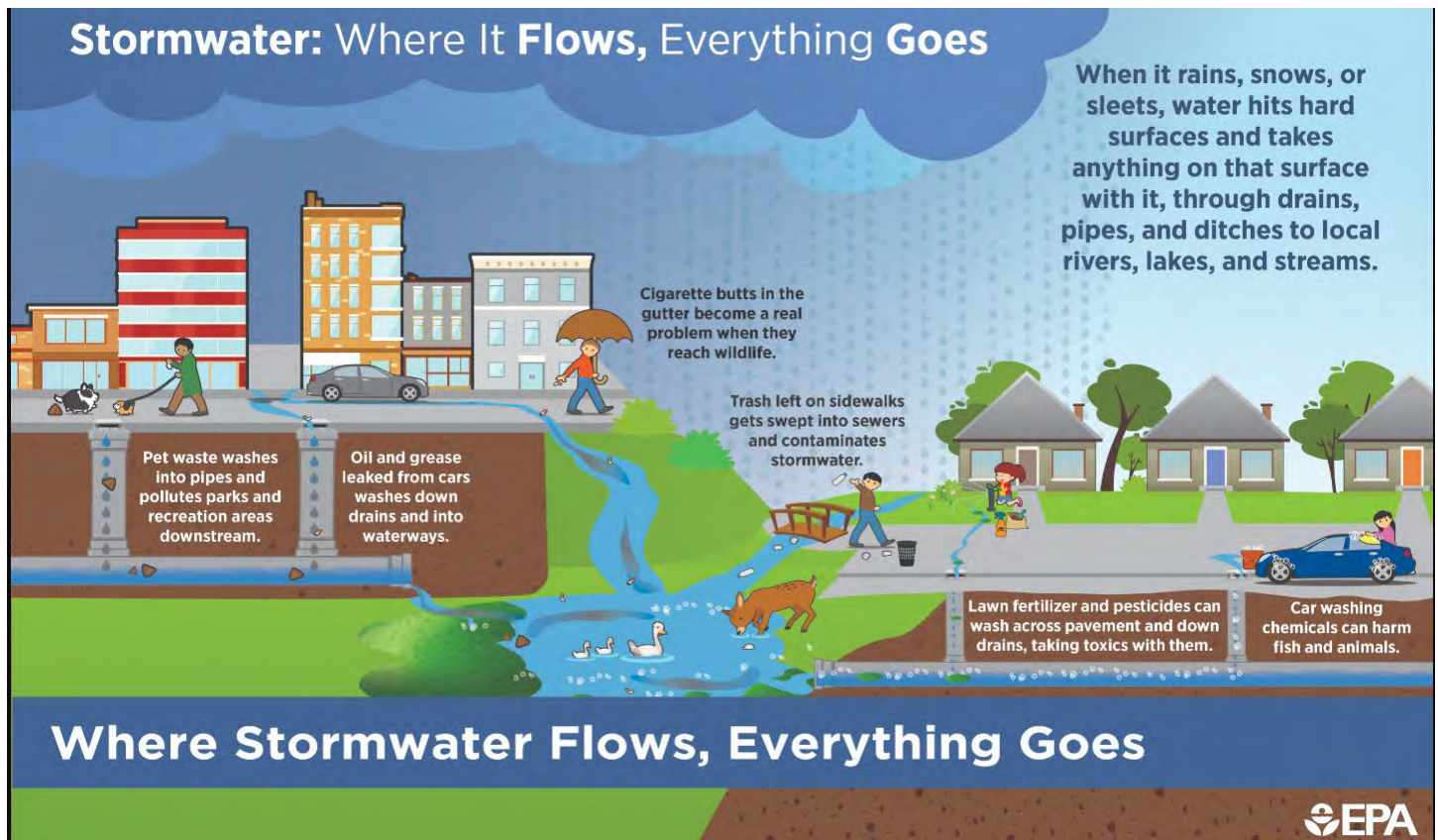
[www.transitiontownmedia.org/volunteer/working-groups/protecting-biodiversity-working-group](http://www.transitiontownmedia.org/volunteer/working-groups/protecting-biodiversity-working-group)

[www.birdtownpa.org/the-big-bucket-mosquito-solution-just-dunk-it](http://www.birdtownpa.org/the-big-bucket-mosquito-solution-just-dunk-it)

[www.nwf.org/magazines/National-Wildlife/2021/April-May/Conservation/Mosquitoes](http://www.nwf.org/magazines/National-Wildlife/2021/April-May/Conservation/Mosquitoes)

[www.audubonva.org/news/how-to-set-up-a-mosquito-larva-trap](http://www.audubonva.org/news/how-to-set-up-a-mosquito-larva-trap)

The NPT Bird Town Committee posts a monthly article and other resources on the NPT website, under Environmental Advisory Committee.





# TOWNSHIP NEWS

## PUBLIC WORKS GARAGE:

The additional five bays provide increased capacity for vehicle maintenance, storage, and community services. This expansion aligns with our dedication to meeting the growing needs of our community while ensuring efficient and reliable public services.

## EXCITING UPDATES AT THE TOWNSHIP BUILDING:

We are thrilled to announce some exciting enhancements at the Township Building funded by the Local Share Account Grant that are sure to make your visits more comfortable and accessible! Our commitment to creating a welcoming space for everyone has led to the installation of an elevator, new windows, and a brand-new roof.

## PLASTIC BAG BAN:

In an effort to reduce litter in the streets, parks, and areas around the Township, as well as protect the environment, the Township has banned single-use plastic bags at commercial establishments. Please remember to bring reusable bags when shopping. Thank you for your cooperation!

## NETHER PROVIDENCE ATHLETIC ASSOCIATION (NPAA):

Spring/Summer programs are in full swing. Be sure to check out these organizations' websites for more information and registration.

Nether Swarthmore Baseball & Softball- <https://www.npaabaseball.com/>

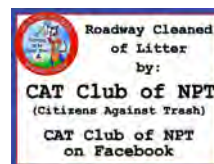
Nether United Soccer- <http://www.npaasoccer.com/>

Nether Swarthmore Basketball- <https://www.swarthmorecreation.org/basketball/>

Haven Youth Wrestling- <https://www.havenwrestling.org/>

## CITIZENS AGAINST TRASH CLUB (CAT CLUB):

Follow them on Facebook for upcoming cleanup events and more information.



## FRIENDLY REMINDER:

Let's all do our part to keep our community clean! As the weather gets warmer, please pick up your dog's waste so other people and pets don't step in it. The Township has provided Pet Waste Eliminator Stations at all of our parks for convenience.

## HOW DO I REPORT A POTHOLE ON A STATE ROAD?:

1. Go to [www.penndot.pa.gov](http://www.penndot.pa.gov).
2. Click "submit concern."
3. Hit "new concern."
4. Click "road or bridge conditions."
5. Select "pothole"
6. Hit SUBMIT

## **State Roads in Nether Providence Township**

Baltimore Pike Manchester Ave Beatty Road Rogers Lane Brookhaven Road Providence Road Bullens Lane  
Turner Road Chester Road Wallingford Ave Chestnut Pkwy Waterville Road Crum Creek Road Rose Valley Road

# TOWNSHIP NEWS

Continued from page 15

## TAX OFFICE

### TAX PAYMENTS:

Mail or hand deliver to:  
214 Sykes Lane  
Wallingford, PA 19086

### TAX OFFICE PHONE NUMBERS:

Township Treasurer/Tax Collector:	484-480-9524
School Tax Office:	610-892-3470
County Real Estate Tax Office	610-891-4277
Tax Claim Bureau	610-891-4282
Board of Assessment	610-891-4878

To receive a paid receipt, please include the entire bill and a self-addressed, stamped envelope OR include your email address.

To make a payment appointment, email [taxcollector@netherprovidence.org](mailto:taxcollector@netherprovidence.org) or call 484-480-9524. Township staff CANNOT stamp payments received.

### PROPERTY TAX/RENT REBATE PROGRAM

The rebate program benefits eligible Pennsylvanians age 65 and older; widows and widowers age 50 and older; and people with disabilities age 18 and older. The income limit is \$35,000 a year for homeowners and \$15,000 annually for renters, and half of Social Security income is excluded. Spouses, personal representatives or estates may also file rebate claims on behalf of claimants who lived at least one day in the claim year and meet all other eligibility criteria.

**Property Tax/Rent Rebate Program:** 1-888-222-9190

**Application Deadline:** Applications for 2023 Property Tax/Rent Rebates are due by June 30, 2024.

[www.revenue.pa.gov/PTRR](http://www.revenue.pa.gov/PTRR)



## PENNSYLVANIA DEPARTMENT OF REVENUE

### PROPERTY TAX/RENT REBATE PROGRAM



**The Property Tax/Rent Rebate program** benefits eligible Pennsylvanians age 65 and older; widows and widowers age 50 and older; and people with disabilities age 18 and older. The income limit is \$35,000 a year for homeowners and \$15,000 annually for renters. Claimants may exclude half of their Social Security income.

In addition, federal Civil Service Retirement System benefit recipients may exclude 50% of the average annual Social Security benefit amount from their total eligibility income and veterans with federal veterans' disability payments or state veterans' payments may exclude 100% of those payments. The maximum standard rebate is \$650, but supplemental rebates for qualifying homeowners can boost rebates to \$975.

**For more information about the Property Tax/Rent Rebate Program, please visit [revenue.pa.gov/PTRR](http://revenue.pa.gov/PTRR).**





FOOD PANTRY



*Lifewerks,*  
**Inc.** *Life works  
where  
hope thrives*

**STILL A NEED**

**Food Pantry**

**What we need most:**

- Canned Soup
- Kid's Cereal
- Health and Hygiene products
- Condiments and Salad Dressing
- Household paper products

**Want to know more?**

Check out our website at  
[www.lifewerks.org](http://www.lifewerks.org)

Donate here:



**Drop off site at Township Office  
214 Sykes Ln Monday - Friday 9am-5pm**



***Thank You to the Businesses***

This publication is produced at no cost to Nether Providence Township residents thanks to the generous sponsorship of the businesses listed throughout the newsletter. The Township recognized these businesses as community supporters and encourages residents to also suggest these local businesses with their patronage.



# NETHER PROVIDENCE TOWNSHIP OFFICE HOURS

Monday through Friday 9 a.m. to 5 p.m.



## BOARD OF COMMISSIONERS

- Kaitlin McKenzie—4th Ward, President, [kmckenzie@netherprovidence.org](mailto:kmckenzie@netherprovidence.org)
- Matthew Garson—2nd Ward, Vice President, [mgarson@netherprovidence.org](mailto:mgarson@netherprovidence.org)
- Max Cooper—1st Ward, [mcooper@netherprovidence.org](mailto:mcooper@netherprovidence.org)
- Beth Henry—3rd Ward, [bhenry@netherprovidence.org](mailto:bhenry@netherprovidence.org)
- Shaina Barnes—5th Ward, [sbarnes@netherprovidence.org](mailto:sbarnes@netherprovidence.org)
- Robert E. O'Connor—6th Ward, [roconnor@netherprovidence.org](mailto:roconnor@netherprovidence.org)
- Candice Carbone—7th Ward, [ccarbone@netherprovidence.org](mailto:ccarbone@netherprovidence.org)

The Board of Commissioners meetings are live-streamed on YouTube. The stream can be found by searching for "Nether Providence Township" on YouTube. The meeting also can be watched on TV (channel 5 for Comcast, and channel 37 for Verizon.)

## PUBLIC MEETINGS

- Board of Commissioners Working Session, 2nd Thursday, 7:30 p.m.
- Board of Commissioners Legislative Session, 4th Thursday, 7:30 p.m.
- Planning Commission – 1st Monday, 7:30 p.m. (unless a holiday)
- Zoning Hearing Board – 2nd Monday, 7:30 p.m. January, February, and June. March - December – 3rd Monday, 7:30 p.m.
- Parks Commission – 2nd Monday, 7 p.m.
- Environmental Advisory Committee (EAC) 4th Wednesday of every month at 7 p.m.
- Historical Commission- 3rd Wednesday of every month at 7:00 p.m.

# *Cirilli Associates, Inc.*

an engineering & mgt consulting company & Parent Company of West Chester based

## Yerkes Associates, Inc

### Celebrating 150 Years of Service (1874 - 2024)

[www.cirilli-assoc.com](http://www.cirilli-assoc.com)

[www.yerkes-assoc.com](http://www.yerkes-assoc.com)

### Civil / Structural Engineering

- \* Land Surveying
- \* Retaining Walls
- \* Facilities Mgm't
- \* Land Development
- \* Structural Analysis
- \* Owner's Agent

Delco Office, 1489 Baltimore Pike, Suite 228, Springfield, Pa., 19064  
Nick Cirilli, PE, PLS • 610-613-3455(cell) • [ncirilli@comcast.net](mailto:ncirilli@comcast.net)



**DiGravio**

**PLUMBING & HEATING INC.**

"Where tradition and modern technology meet since 1956"



**David Di Gravio**  
Owner

102 Emerald Street  
Media, PA 19063

Media, PA

**610-565-5870**

Philadelphia, PA

**215-468-5962**

**DiGravioPlumbingandHeating.com**

email:dave@digravioplumbingandheating.com

**www.wallingforddental.com**



**WALLINGFORD  
STATION  
FAMILY DENTAL**

105 N. Providence Road  
Wallingford, PA 19086  
610-566-7175

**Stephen P. Howarth, D.M.D.**  
**Stephen P. Howarth, Jr. D.M.D.**

Implants, Cosmetic and General  
Dentistry

Named "Top Dentists" by *Mainline Today & Philadelphia Magazine*



**AIR CONDITIONING  
REPAIRS & TUNE UPS**

After more than 50 years in car repair,  
Mano's Automotive is open at  
a new location.

Full Serve and Self Serve Gas Service Available  
WITH THE BEST PRICES IN TOWN

**\$69<sup>95</sup>  
SPECIAL**

**PA STATE INSPECTION  
& EMISSION INSPECTION**

**WANT TO SELL YOUR  
USED CAR?**

**WE PAY CASH!**

**CALL**

**610-876-7498**

**MANO'S AUTO REPAIR**

**320 S. Chester Road, Wallingford, PA 19086 • 610-876-7498**

**PLUSH MILLS**

**Senior Living, but different.**

**Call 610-690-1630**

[www.plushmills.com](http://www.plushmills.com)

501 Plush Mill Road, Wallingford

INDEPENDENT & SUPPORTIVE LIVING  

**DANJOLELL**

MEMORIAL HOMES AND CREMATORY



Completely Renovated  
"Dignified Service Within the Means of All"

**D'ANJOLELL-BARONE MEMORIAL HOME**

908 S. Providence Road, Wallingford, PA 19086

**610-874-7700**

**GALANTINO**  
SUPPLY COMPANY

- MASONRY PRODUCTS
- NATURAL STONE
- LANDSCAPE SUPPLIES

725 OLD MARPLE RD.  
SPRINGFIELD, PA 19064

**610-544-2586**

NETHER PROVIDENCE TOWNSHIP  
214 Sykes Lane  
Wallingford, PA 19086

Presort Standard  
U.S. Postage  
PAID  
Permit No. 550  
Lehigh Valley, PA



Spring/Summer 2024

**hometownpress**

This Community Newsletter is produced for Nether Providence Township  
by Hometown Press • 215.257.1500 • All rights reserved\*

To Place An Ad Call Kathy Ruediger At Hometown Press • 215-527-7664 or email [katruedy@gmail.com](mailto:katruedy@gmail.com)



(610) 461-2559  
[www.pfaffbros.com](http://www.pfaffbros.com)

- Residential & Commercial
- New Home Construction
- Additions
- A.D.A. Work

- Kitchens & Baths
- Windows & Doors
- Siding & Decks
- Basement Renovation
- LEED Certified

Green Bldg. Council Member



**DON CARPENTER**

ENHANCE YOUR LANDSCAPE,  
OFFICE, DISPLAY, OR EXHIBIT  
WITH HEX ART!

**HEX-MAGIC.COM**

610-304-5912

[info@Hex-Magic.com](mailto:info@Hex-Magic.com)

**SCHOOL BUS  
DRIVERS  
NEEDED NOW!**

Join Our Springfield Team!

**BONUSES!**



STUDENT TRANSPORTATION OF AMERICA®

No Experience Required  
Paid Professional Training  
Flexible Part-Time Schedule

APPLY ONLINE AT [STACAREERS.COM](http://STACAREERS.COM)  
OR CALL (484) 472-6750



Serving your community!

PO Box 98  
Lenni, PA 19052

610-358-1288  
Fax: 610-358-1308  
[laxtontrash.com](http://laxtontrash.com)