

DISTRICT	COUNTY	ROUTE	SECTION	SHEET
6-0	DELAWARE	0000	MRS	1 OF 7
NETHER PROVIDENCE TOWNSHIP				
REVISION NUMBER	REVISIONS	DATE	BY	

GENERAL NOTES

1. CONSTRUCT THIS PROJECT IN ACCORDANCE WITH PENNDOT PUBLICATION 408 DATED 2011, AND ALL SUPPLEMENTS AND SPECIFICATIONS
2. ALL DIMENSIONS ARE IN FEET UNLESS OTHERWISE NOTED.

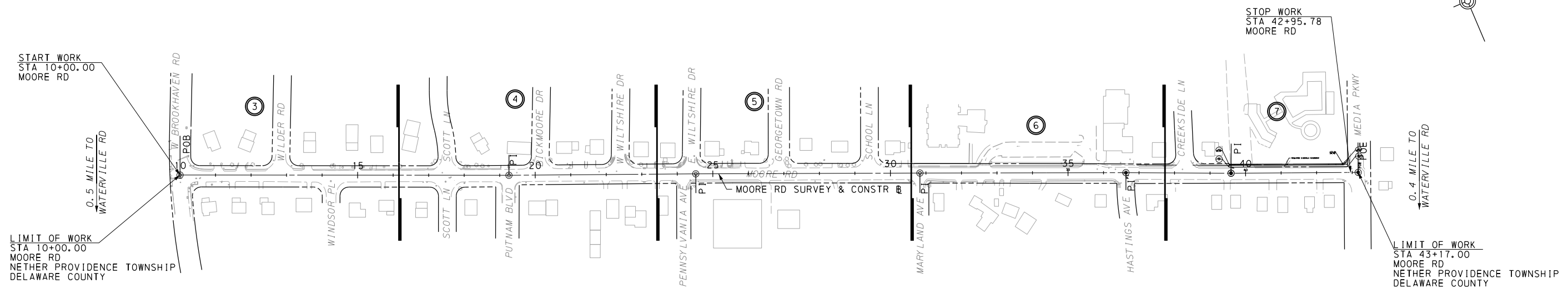
SIGNING NOTES

1. FOR NAMES, ADDRESSES, AND LOCATIONS OF EXISTING UTILITY FACILITIES, SEE ROADWAY CONSTRUCTION PLAN.
2. THIS PROJECT HAS BEEN DESIGNED UNDER STANDARDS ESTABLISHED IN THE FEDERAL HIGHWAY ADMINISTRATION'S MANUAL ON UNIFORM TRAFFIC CONTROL DEVICES FOR STREETS AND HIGHWAYS, DATED 2009, AND ALL APPLICABLE SUPPLEMENTS.
3. PLACE ALL SIGNS ENTIRELY WITHIN THE LEGAL RIGHT-OF-WAY.
4. WHENEVER AN EXISTING UNDERGROUND UTILITY IS SHOWN ON THE DRAWINGS TO BE LOCATED IN THE IMMEDIATE VICINITY OF PROPOSED CONSTRUCTION, ITS LOCATION IS APPROXIMATE, AND THE CONTRACTOR SHALL CONTACT THE UTILITY COMPANY AND REQUEST THAT THEY FIELD LOCATE THEIR FACILITY.
5. MOUNT ALL SIGNS AT A MINIMUM CLEARANCE HEIGHT OF 7.0 FEET.
6. COORDINATE PLACEMENT OF PERMANENT SIGNS AND PAVEMENT MARKINGS, AND COORDINATE REMOVAL OF EXISTING SIGNS AND PAVEMENT MARKINGS WITH THE APPROPRIATE TRAFFIC CONTROL PHASE. REFER TO THE TRAFFIC CONTROL PLAN.

PAVEMENT MARKINGS NOTES

1. INSTALL PAVEMENT MARKINGS IN ACCORDANCE WITH PENNDOT TC-8600 SERIES, PAVEMENT MARKING STANDARDS AND THE FEDERAL HIGHWAY ADMINISTRATION "MANUAL ON UNIFORM TRAFFIC CONTROL DEVICES", OR AS DIRECTED BY THE PENNSYLVANIA DEPT. OF TRANSPORTATION DISTRICT 6-0 ENGINEER.
2. APPLY ALL PAVEMENT MARKINGS AT THE WIDTH INDICATED.
3. ALL PAVEMENT MARKINGS AT LIMIT OF PAVING SHALL MEET EXISTING PAVEMENT MARKINGS WHERE APPLICABLE.

SHEET INDEX BLOCK	
DESCRIPTION	SHEET
INDEX MAP SHEET	1
DETAIL	2
PLAN SHEETS	3-7

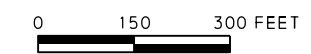


LEGEND

- PLAN VIEW SHEET NUMBER
- SHEET LIMIT
- PROPOSED SIDEWALK
- TYPE B (RED) FLASHING LIGHT
- W/4" WHITE PAVEMENT MARKING/WIDTH
- W/24" WHITE PAVEMENT MARKING/WIDTH
- DY/4" DOUBLE YELLOW PAVEMENT MARKING/WIDTH
- DEDY/4" DOTTED EXTENSION DOUBLE YELLOW PAVEMENT MARKING/WIDTH
- FYG FLOURESCENT YELLOW GREEN BACKGROUND

CONSTRUCTION DETAILS OTHER THAN THOSE SHOWN ON THESE DRAWINGS TO CONFORM TO THE FOLLOWING STANDARD DRAWINGS:

TC-8600	RECOMMENDED	JUNE 13, 2013
TC-8702B	RECOMMENDED	JUNE 13, 2013



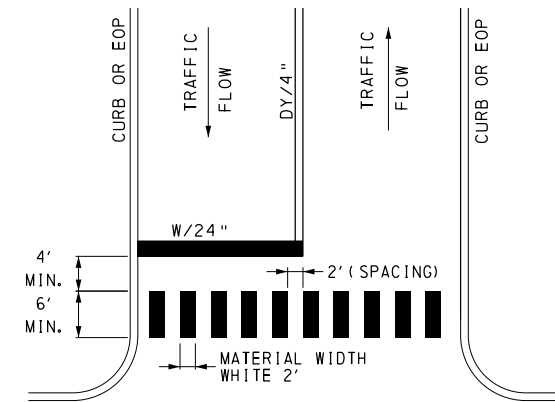
SIGNING AND PAVEMENT MARKING PLAN INDEX MAP

Michael Baker INTERNATIONAL
 500 OFFICE CENTER DRIVE, SUITE 210,
 FORT WASHINGTON, PA 19034-3234
 Phone: (215) 444-0888 • MBAKERINTL.COM

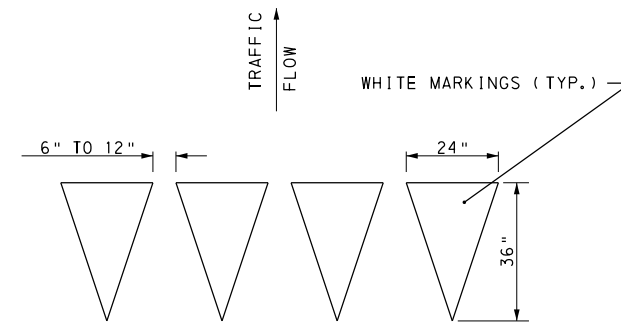
07-SEP-2017

E:\155118-Moore Rd\Plot\Traffic\SignStr\ipe\01-MRS_IndexMap.dgn

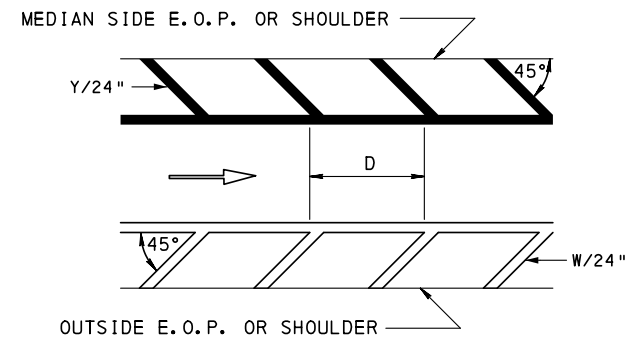
DISTRICT	COUNTY	ROUTE	SECTION	SHEET	
6-0	DELAWARE	0000	MRS	2 OF 7	
NETHER PROVIDENCE TOWNSHIP					
REVISION NUMBER	REVISIONS			DATE	BY



**TYPE C PERPENDICULAR
STANDARD CROSSWALK MARKINGS**
NOT TO SCALE



YIELD LINE LAYOUT
NOT TO SCALE



D = SPACING OF DIAGONAL LINES (TYPICALLY EQUAL IN FEET TO THE POSTED SPEED LIMIT).
INCREASE SPACING OF DIAGONALS TO 60 m (200') OR MORE ON INTERSTATE ROADWAYS.

EDGE OF PAVEMENT OR SHOULDER ISLAND
NOT TO SCALE

LEGEND:

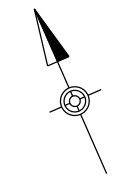
- PROPOSED SIDEWALK
- TYPE B (RED) FLASHING LIGHT
- W/4" - WHITE PAVEMENT MARKING/WIDTH
- W/24" - WHITE PAVEMENT MARKING/WIDTH
- DY/4" - DOUBLE YELLOW PAVEMENT MARKING/WIDTH
- DEDY/4" - DOTTED EXTENSION DOUBLE YELLOW PAVEMENT MARKING/WIDTH
- DEW/4" - DOTTED EXTENSION WHITE PAVEMENT MARKING/WIDTH
- FYG - FLOURESCENT YELLOW GREEN BACKGROUND

**SIGNING AND
PAVEMENT MARKING DETAIL**

07-SEP-2017

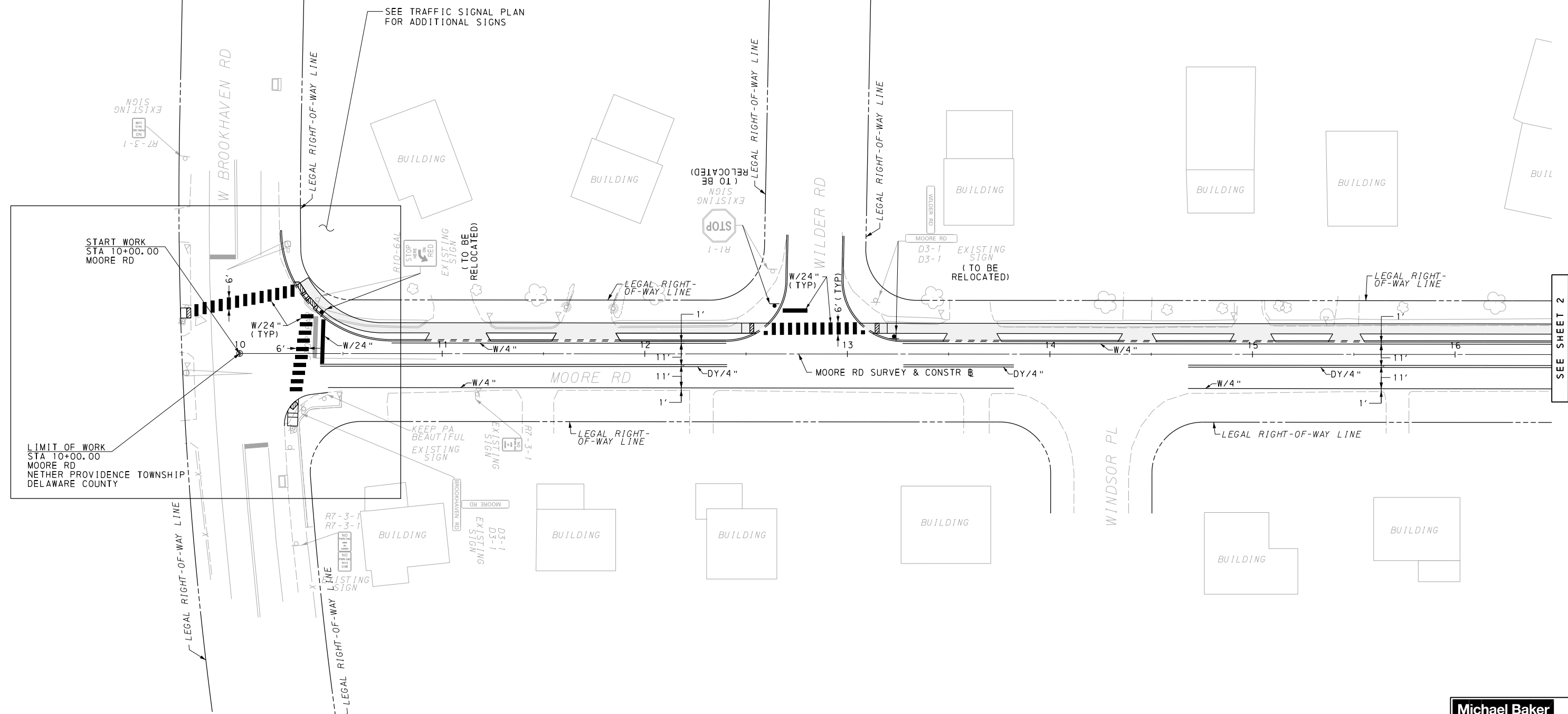
E:\155118_Moore_Rd\Plot\Traffic\SignStr\ipe\02-MRS-SignPM-Detail101.dgn

DISTRICT	COUNTY	ROUTE	SECTION	SHEET
6-0	DELAWARE	0000	MRS	3 OF 7
NETHER PROVIDENCE TOWNSHIP				
REVISION NUMBER	REVISIONS	DATE	BY	

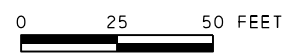


07-SEP-2017

E:\155118-Moore Rd\Plot\Traffic\SignStr\ipe\03-MRS-SignPM_P.lcn01.dgn



- LEGEND:**
- PROPOSED SIDEWALK
 - TYPE B (RED) FLASHING LIGHT
 - W/4" - WHITE PAVEMENT MARKING/WIDTH
 - W/24" - WHITE PAVEMENT MARKING/WIDTH
 - DY/4" - DOUBLE YELLOW PAVEMENT MARKING/WIDTH
 - DEDY/4" - DOTTED EXTENSION DOUBLE YELLOW PAVEMENT MARKING/WIDTH
 - DEW/4" - DOTTED EXTENSION WHITE PAVEMENT MARKING/WIDTH
 - FYG - FLOURESCENT YELLOW GREEN BACKGROUND



SEE SHEET 2

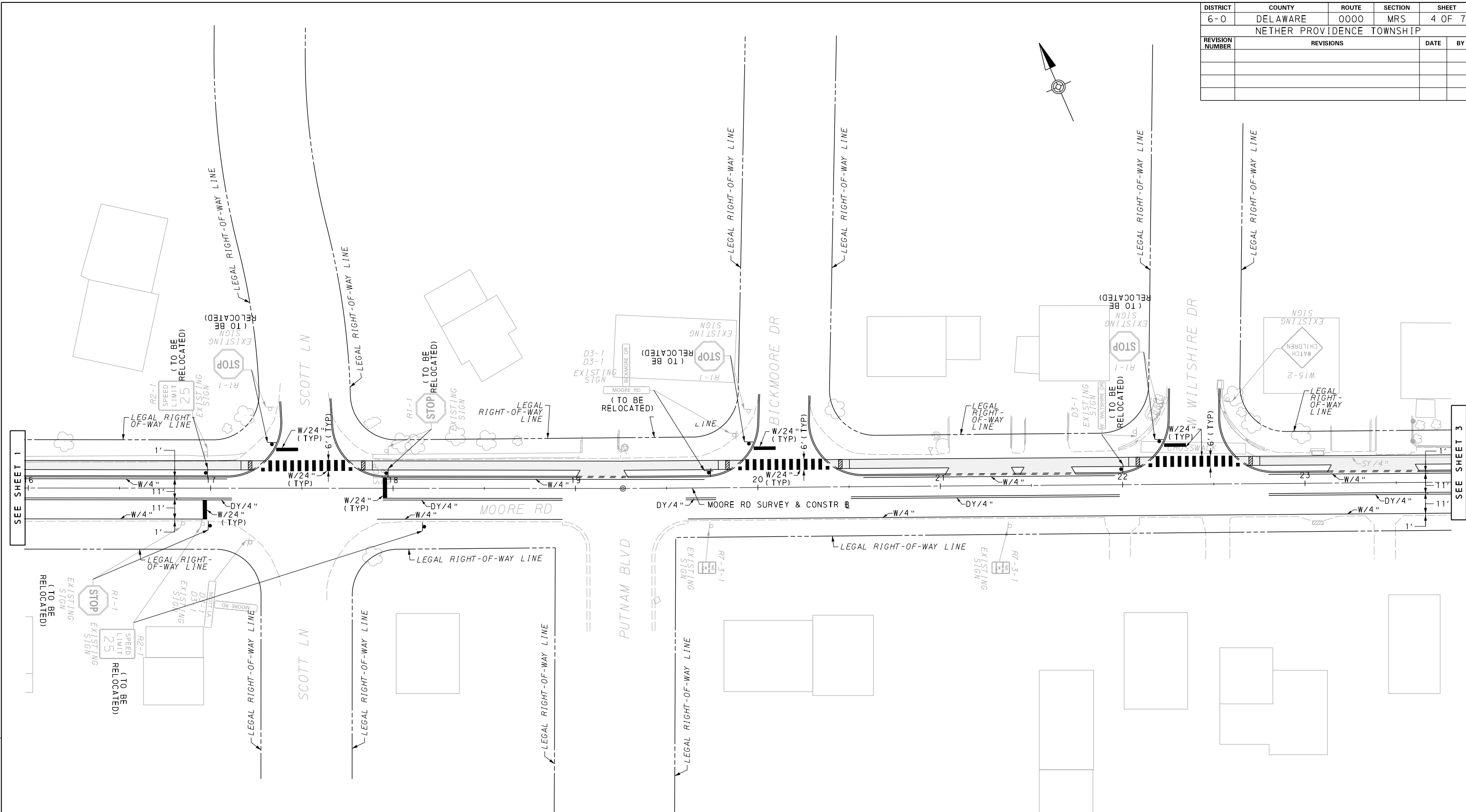
SIGNING AND PAVEMENT MARKING PLAN

Michael Baker INTERNATIONAL
 500 OFFICE CENTER DRIVE, SUITE 210,
 FORT WASHINGTON, PA 19034-3234
 Phone: (215) 444-0888 • M.BAKER@INTL.COM

07-SEP-2017

E:\155118_Moore Rd\Plot\Traffic\SignStr\ipe\04-MRS-SignPM_Plan02.dgn

DISTRICT	COUNTY	ROUTE	SECTION	SHEET
6-0	DELAWARE	0000	MRS	4 OF 7
NETHER PROVIDENCE TOWNSHIP				
REVISION NUMBER	REVISIONS	DATE	BY	

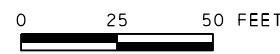


SEE SHEET 1

SEE SHEET 3

LEGEND:

- PROPOSED SIDEWALK
- TYPE B (RED) FLASHING LIGHT
- WHITE PAVEMENT MARKING/WIDTH
- WHITE PAVEMENT MARKING/WIDTH
- DOUBLE YELLOW PAVEMENT MARKING/WIDTH
- DOTTED EXTENSION DOUBLE YELLOW PAVEMENT MARKING/WIDTH
- DOTTED EXTENSION WHITE PAVEMENT MARKING/WIDTH
- FLOURESCENT YELLOW GREEN BACKGROUND

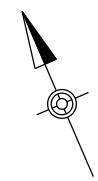
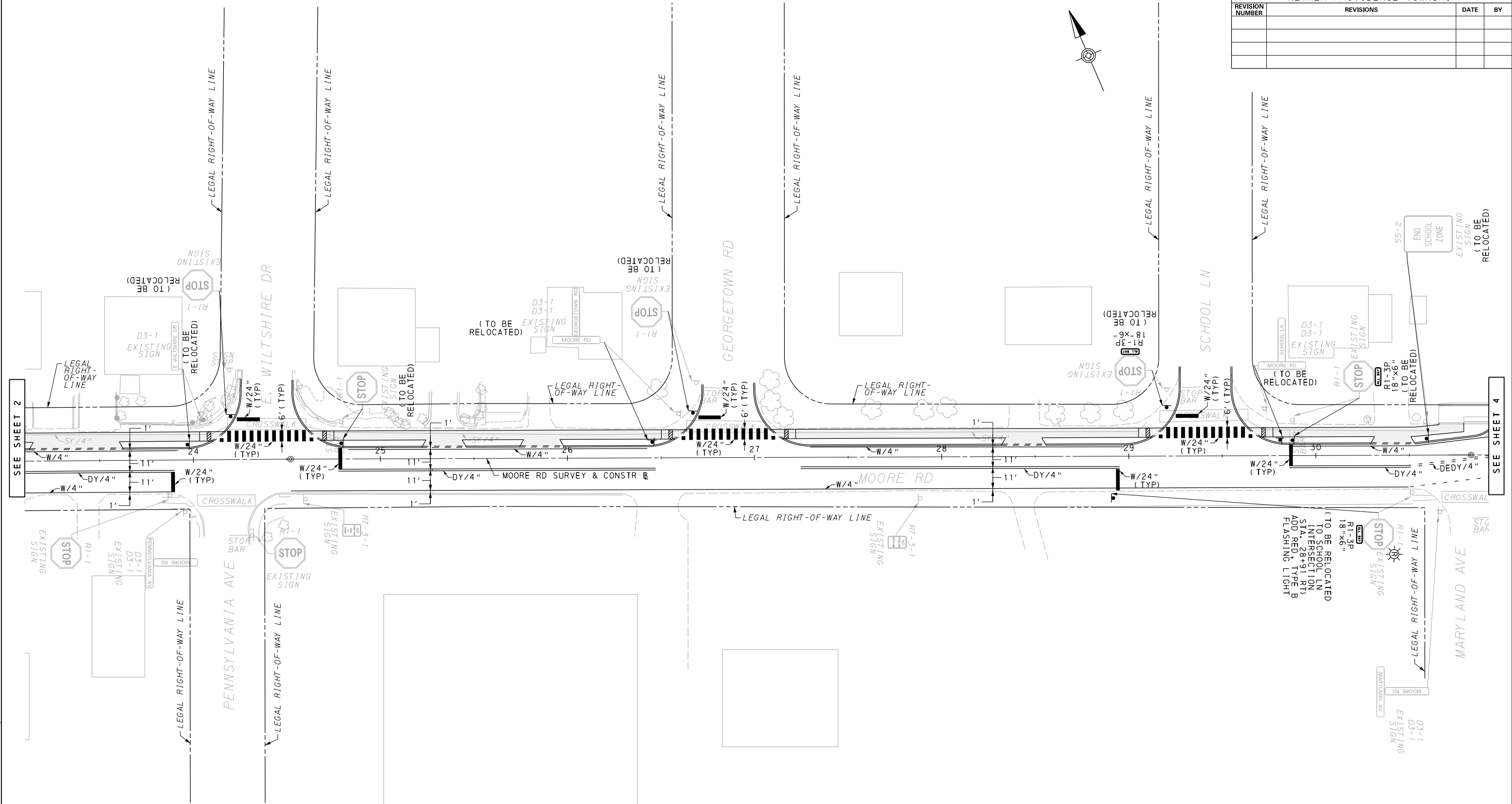


SIGNING AND PAVEMENT MARKING PLAN

07-SEP-2017

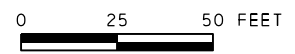
E:\155118_Moore Rd\Plot\Traffic\SignStr\ipe\05-MRS-SignPM_Plan03.dgn

DISTRICT	COUNTY	ROUTE	SECTION	SHEET
6-0	DELAWARE	0000	MRS	5 OF 7
NETHER PROVIDENCE TOWNSHIP				
REVISION NUMBER	REVISIONS	DATE	BY	



LEGEND:

- PROPOSED SIDEWALK
- TYPE B (RED) FLASHING LIGHT
- WHITE PAVEMENT MARKING/WIDTH
- WHITE PAVEMENT MARKING/WIDTH
- DOUBLE YELLOW PAVEMENT MARKING/WIDTH
- DOTTED EXTENSION DOUBLE YELLOW PAVEMENT MARKING/WIDTH
- DOTTED EXTENSION WHITE PAVEMENT MARKING/WIDTH
- FLOURESCENT YELLOW GREEN BACKGROUND



**SIGNING AND
PAVEMENT MARKING PLAN**

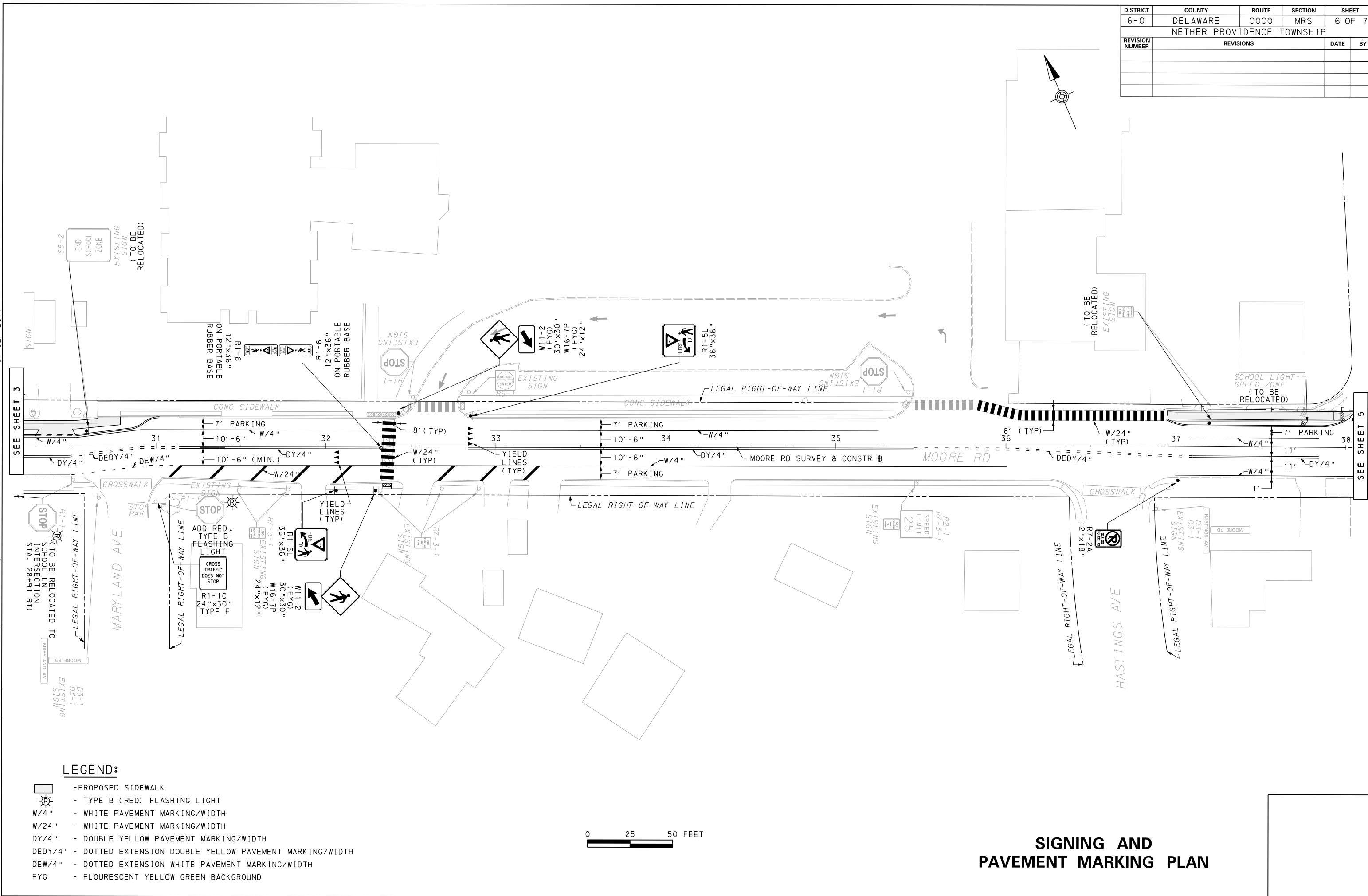
SEE SHEET 2

SEE SHEET 4

DISTRICT	COUNTY	ROUTE	SECTION	SHEET
6-0	DELAWARE	0000	MRS	6 OF 7
NETHER PROVIDENCE TOWNSHIP				
REVISION NUMBER	REVISIONS	DATE	BY	

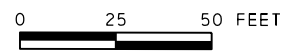
07-SEP-2017

E:\155118_Moore Rd\Plot\Traffic\SignStr\ipe\06-MRS_SignPM_Plan04.dgn



LEGEND:

- PROPOSED SIDEWALK
- TYPE B (RED) FLASHING LIGHT
- W/4" - WHITE PAVEMENT MARKING/WIDTH
- W/24" - WHITE PAVEMENT MARKING/WIDTH
- DY/4" - DOUBLE YELLOW PAVEMENT MARKING/WIDTH
- DEDY/4" - DOTTED EXTENSION DOUBLE YELLOW PAVEMENT MARKING/WIDTH
- DEW/4" - DOTTED EXTENSION WHITE PAVEMENT MARKING/WIDTH
- FYG - FLOURESCENT YELLOW GREEN BACKGROUND



**SIGNING AND
PAVEMENT MARKING PLAN**

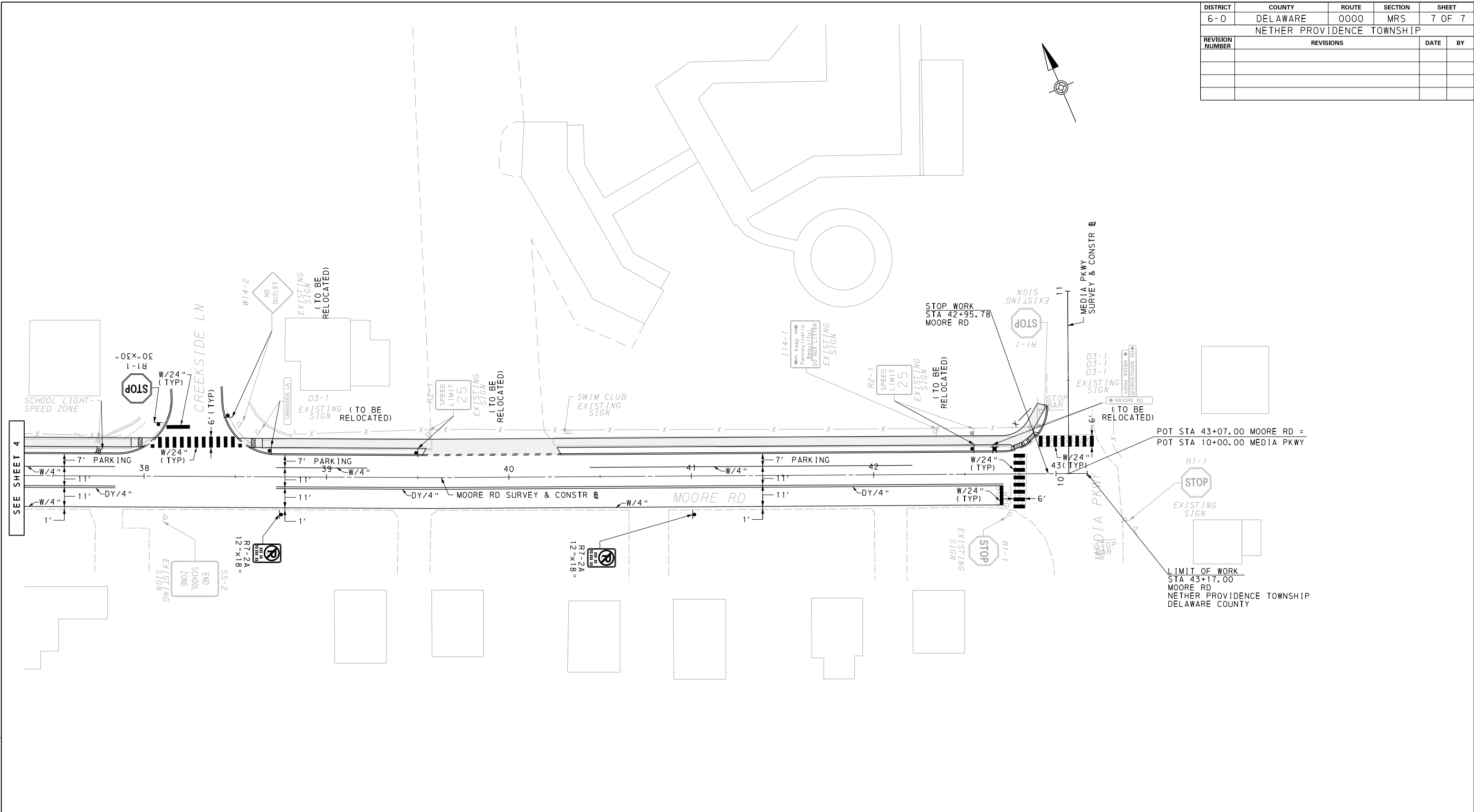
SEE SHEET 3

SEE SHEET 5

DISTRICT	COUNTY	ROUTE	SECTION	SHEET
6-0	DELAWARE	0000	MRS	7 OF 7
NETHER PROVIDENCE TOWNSHIP				
REVISION NUMBER	REVISIONS	DATE	BY	

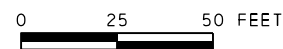
07-SEP-2017

E:\155118_Moore Rd\Plot\Traffic\SignStr\ipe\07-MRS-SignPM_Plan05.dgn



LEGEND:

- PROPOSED SIDEWALK
- TYPE B (RED) FLASHING LIGHT
- W/4" - WHITE PAVEMENT MARKING/WIDTH
- W/24" - WHITE PAVEMENT MARKING/WIDTH
- DY/4" - DOUBLE YELLOW PAVEMENT MARKING/WIDTH
- DEDY/4" - DOTTED EXTENSION DOUBLE YELLOW PAVEMENT MARKING/WIDTH
- DEW/4" - DOTTED EXTENSION WHITE PAVEMENT MARKING/WIDTH
- FYG - FLOURESCENT YELLOW GREEN BACKGROUND



**SIGNING AND
PAVEMENT MARKING PLAN**