

Keep Vehicle Washing from Harming Our Streams

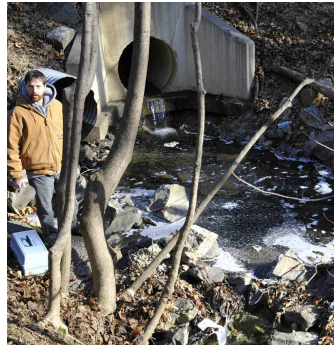
Pollution Prevention for Firehouses

DID YOU KNOW:

- Soapy runoff from vehicle washing entering storm drains flows untreated into our streams.
- Detergent levels as low as 0.1 ppm can harm wildlife and negatively impact drinking water supplies.
- Detergents are a source of excessive nutrients which also degrade streams.



1 Detergents contain surfactants harmful to wildlife and the water supply.

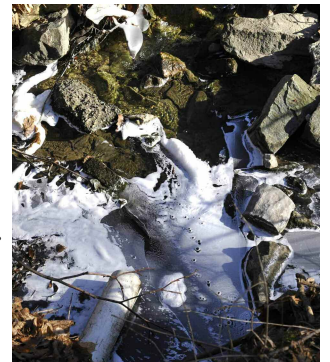


3 Stormwater outfalls conduct this polluted water from storm drains untreated into our streams. (Crum Creek outfall, 1/17/09).



2 Runoff from vehicle washing can enter streams via storm drains in parking lots or streets. Many floor drains also connect to storm drains.

4 The detergent levels in this stream measured 0.15 mg/L downstream from the outfall. (Crum Creek outfall, 1/17/09).



5 Detergent also contributes to excessive loadings of nitrogen and phosphorus to our streams (Crum Creek outfall, 1/17/09).

TO PREVENT POLLUTING OUR STREAMS:

- Do not allow soapy water to run down the street into storm drains.
- Determine whether your floor drains connect to sanitary sewers or storm sewers.
- Switch to plain water only for vehicle washing.
- Use dry cleanup methods, such as sweeping and absorbents, to clean floors and spills.

THANK YOU FOR HELPING TO PROTECT CLEAN WATER!

This message is brought to you by your municipality and Chester-Ridley-Crum Watersheds Association, www.crcwatersheds.org.